



TX7153

Hydrant Button

Feature and Benefits

Using microprocessor technology Digital addressing

Non-breakable glass and hammerless Safe to operate and easy to reset

Surface mounted, indoor application

Overview

The TX7153 fire Hydrant Start Button use a non-breakable plastic which is designed to press under pressure triggering the start button into an alarm condition, with LED indicator mounted onto the front face to simplify the location of an operated start button. Safe to press and no hammer is required. The protected flap on the lower part is used for reset through supplied special tool.

In the event of fire, once it is pressed, the red LED goes on indicate the start button status and parallel sending communication signal to the control panel. Fire alarm controller sends a command signal to light up the green LED indicator, after confirming that the fire pump has been started.



TANDA Development Pte.Ltd.

217 Kallang Bahru #04-02
Singapore 339347
Tel: (65) 6291 3176
Email: info@tandatech.com
Web: www.tnafirealarm.com

TANDA Development Pte.Ltd. | DATASHEET

Copyright © The information contained within these data sheets remains the property of TANDA Development Pte.Ltd. and is not to be altered or reproduced without written permission. TANDA reserves the right to change any specification without giving prior

Technical Specification

Input Voltage
Current Consumption Standby
Protocol/Addressing
Indicator

Material / Colour

Dimension

Weight

Operating Temperature

Ingress Protection Rating

Humidity

24VDC [16V to 28V]

0.65mA, Alarm: 1.5mA

T&A, Value range from 1 to 254

Red LED / Steady On-when pressed Periodically Flash during patrol inspection,

Flashing cycle: about 6 ms

Green LED/Steady On-when fire pump has been started

Fireproof ABS / RED

90 mm x 90 mm x 34 mm

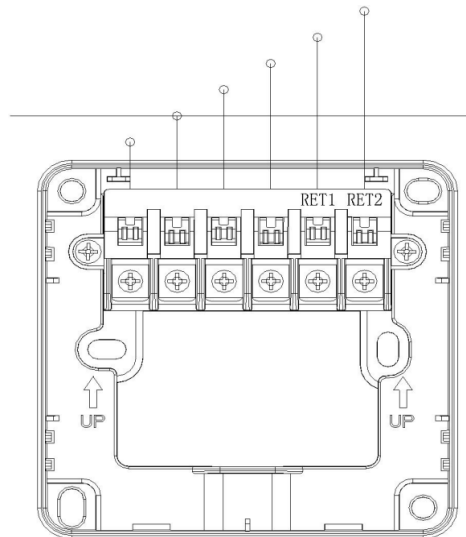
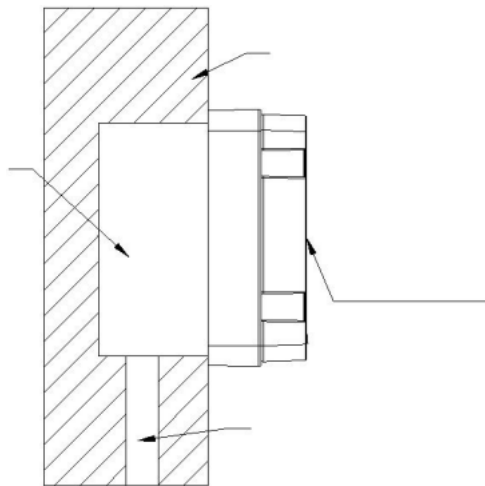
90.5g (with Base)

-10° C to +55° C

IP43

0 to 95% Relative Humidity, Non
condensing

Wiring Details



Z1, Z2 : Connection with signal bus,
nonpolarity.

NO, COM : DC30V/100mA output terminal.
Can output signal to control the
external device, when the button is
pressed.

RET1, RET2 : Answer signal input
terminal for pump starting,
nonpolarity.

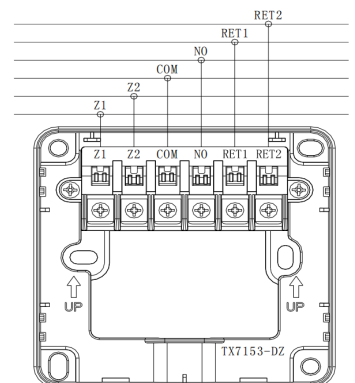
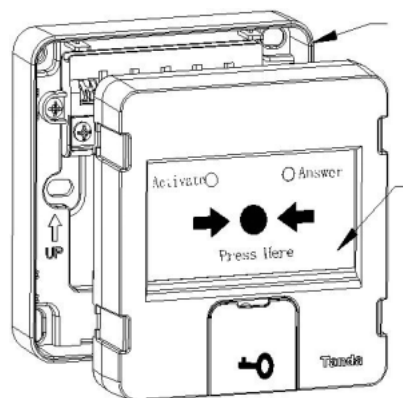
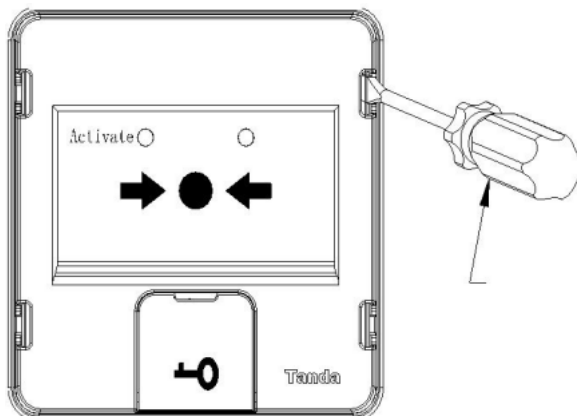


Figure 2



TANDA Development Pte.Ltd.

217 Kallang Bahru #04-02

Singapore 339347

Tel: (65) 6291 3176

Email: info@tandatech.com

Web: www.tnafirealarm.com

TANDA Development Pte.Ltd. | DATASHEET

Copyright © The information contained within these data sheets remains the property of TANDA Development Pte.Ltd. and is not to be altered or reproduced without written permission. TANDA reserves the right to change any specification without giving prior